



RS ISOLSEC

Instrument transformers

Transformateurs de mesure

Transformadores de medida

2014. 06

 **Tech** (주)브이테크

01. Company overview



RS ISOLSEC

Is the specialist for <tailor made> instrument transformer for metering and protection in Low & Medium voltage.

RS ISOLSEC deals with:

- Metering of all currents and voltages
- Energy metering
- Protection against overcurrents
- Earth leakage protection
- For all environments: Indoor, Outdoor, Explosive, Vibrations, Sea shore, High temperatures, Tropical...

02. Brief Figures

1) Name : RS ISOLSEC

2) Foundation : Established in 1954 in France

3) Factory : Cepoy located 100km South of PARIS (France), 6000m²

: Montornès, located 10km North of BARCELONA (Spain), 2000m²

4) Sales figures : 2013 = 15M €

5) Member : 120 people

6) Production -> 120,000 transformers per year

7) www.rsisolsec.com

03. Product Range

- 1) A comprehensive range of Current and Voltage Transformers up to 52kV.
- 2) Hall effect current sensors, and Rogowsky coils.
- 3) Post insulators, bushing insulators, capacitive voltage dividers, series reactors up to 36kV.
- 4) Customized insulating parts in Epoxy resin.

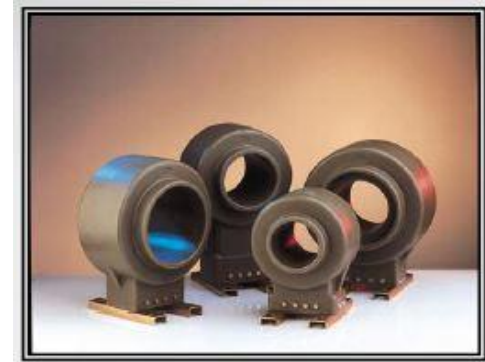
04. LV Current Transformers

- 1) 0.75/4kV up to 2.4/11kV
- 2) Indoor / Outdoor use
- 3) Up to 60,000A
- 4) Metering or protection duties
- 5) IEC, BS, VDE, ANSI, CSA standards
- 6) Wound, Cable, Bar
- 7) Split core



05. MV Current Transformers

- 1) Indoor / Outdoor use
- 2) Up to 52kV (Outdoor)
- 3) 1p up to 20,000A
- 4) 1s = 5 or 1A or any other value
- 5) I_{th} up to 1000 I_n
- 6) 1, 2, 3, 4 or 5 cores
- 7) Post or Window type



06. MV Voltage Transformers

1) Indoor / Outdoor use

2) Up to 52kV (Outdoor)

1) Single or Three-phase

2) 1 or 2 pole insulated

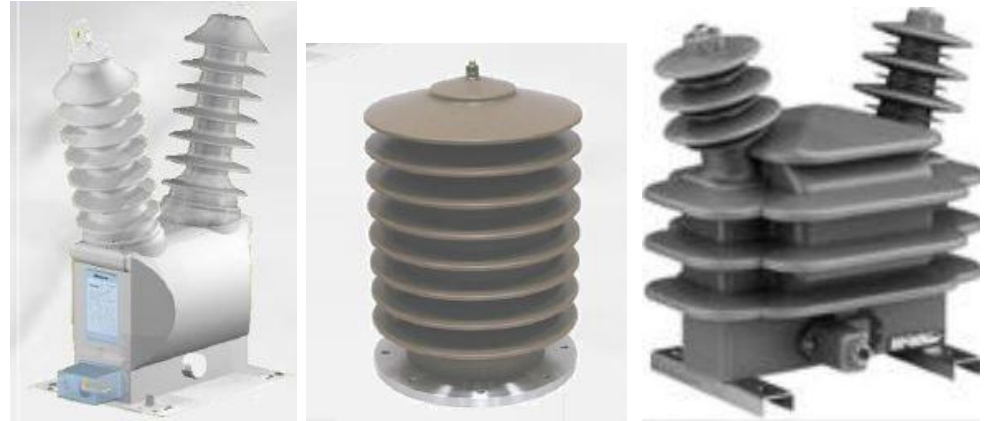
3) With or Without Fuse(s)

4) Anti-explosion range (Patented)

5) Thermal output up to 25kVA

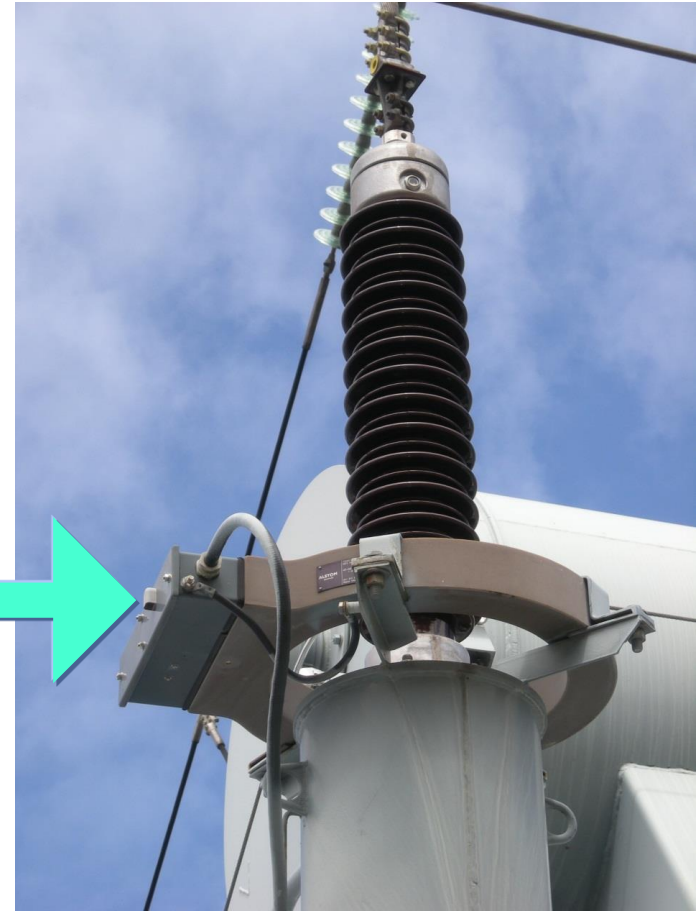
6) Silicone insulators

7) Metalised deadtank finish



07. Power Transformers

CT's AROUND bushings
- OUTDOOR -



08. GIS S/S CT

GIS Substations ...
LV CT's



GIS S/S : Ring Core CT's

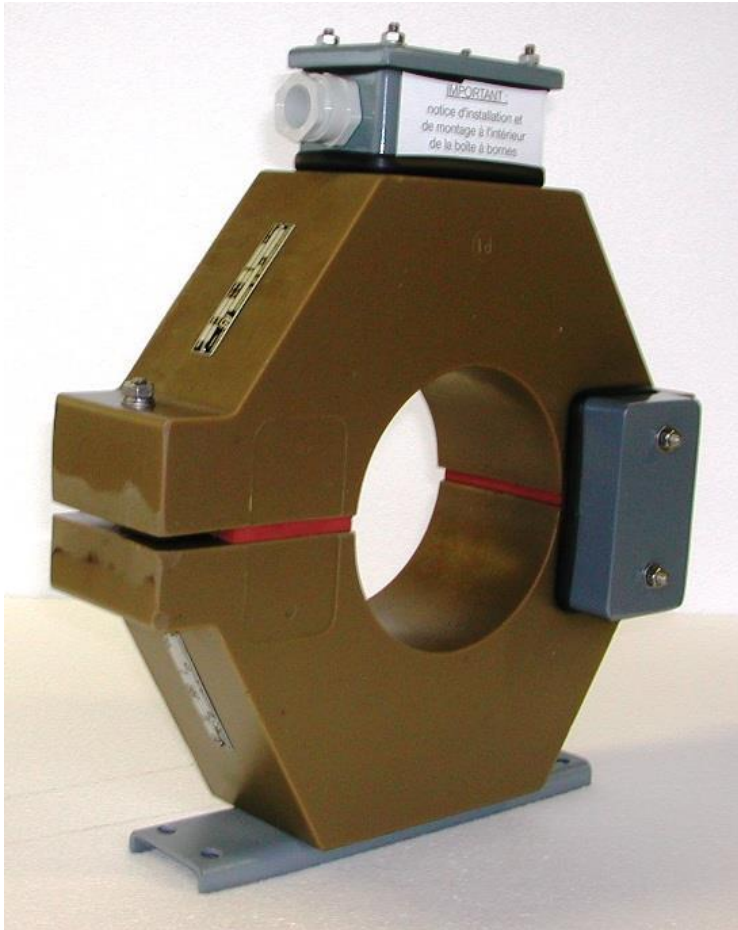


10. Sub-Stations : LV CT's on HV/MV cables

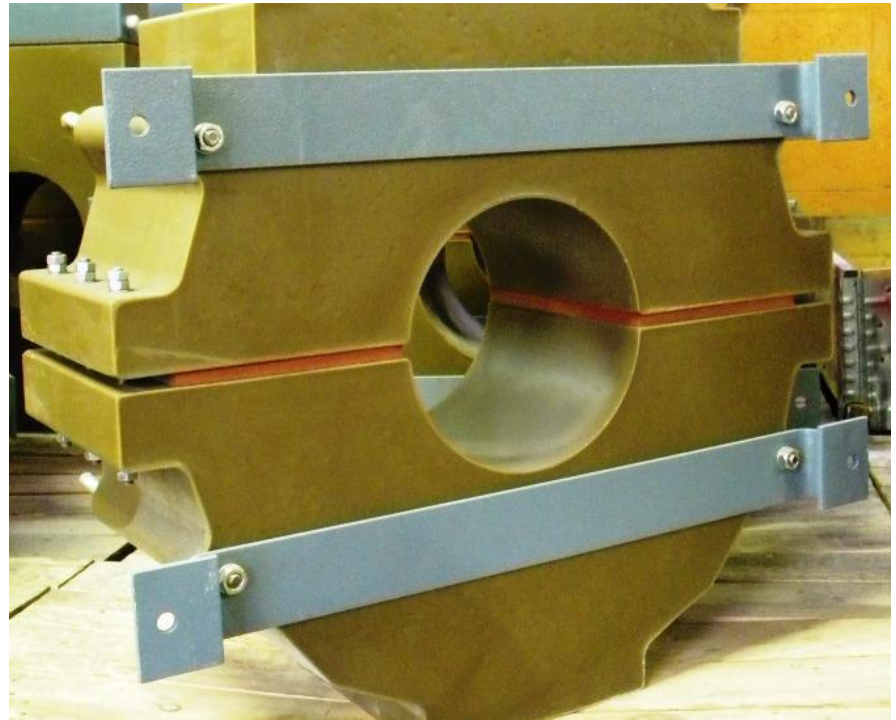


Voltage Limiter & Filter Capacitors in option

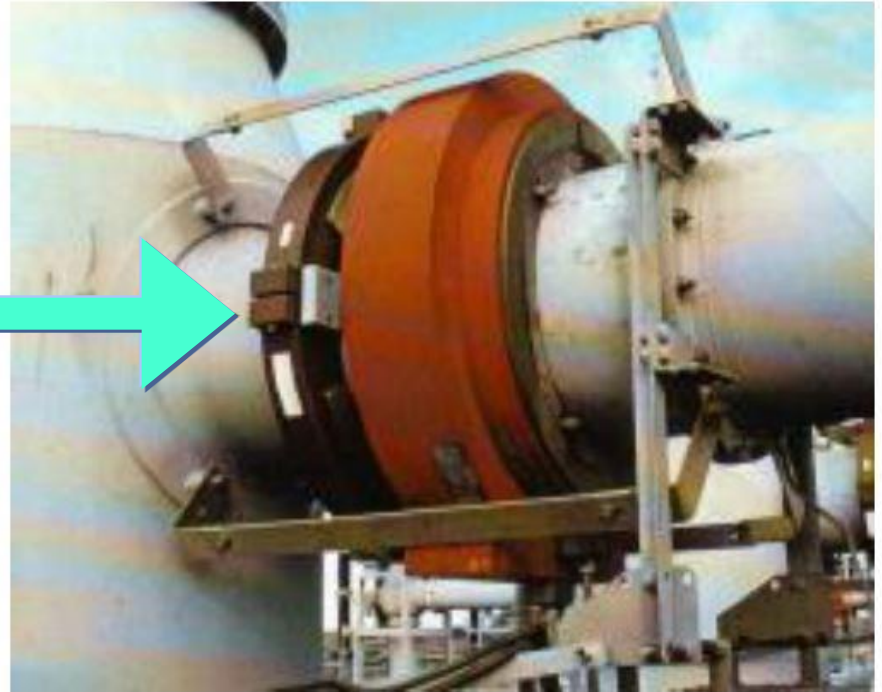
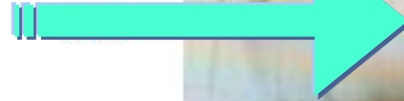
11. SPLIT-CORE CT



When retrofitting becomes simpler with RS ISOLSEC SPLIT-CORE CT



12. GIS S/S : Split-Core CT's



Need for New Protection?

- Faster to implement
- Less outage time
- Safer

13. High Accuracy Metering Class 0.2S

- 1) Perfect match with electronic smart grid metering:
Low consumption – High Accuracy
- 2) Reduced number of reference of CT's to handle: 1 to 3 CT's for all !!
- 3) LV or MV
- 4) Ring core
- 5) Post type



Accuracy class	Error at 0.01In	Error at 0.05In	Error at 0.2In	Error at In	Error at 1.2In
0.1	-	0.4%	0.2%	0.1%	0.1%
0.2	-	0.75%	0.35%	0.2%	0.2%
0.5	-	1.5%	0.75%	0.5%	0.5%
0.2S	0.75	0.35%	0.2%	0.2%	0.2%
0.5S	1.5	0.75%	0.5%	0.5%	0.5%